

¿Dónde Está Estrella?

Where is Star?



A bilingual book about prepositions of place.

By Bronwen M. Dassing

¿Dónde está Estrella? Where is Star?

¡Aquí está ella!
Here she is!

Ella está al lado del
pulpo.
She is beside the octopus.



¿Dondé está Estrella?
Where is Star?



¡Aquí está ella!
Here she is!
Ella está detrás la
concha.
She is behind the seashell.



¿Ahora, dónde está Estrella?
Now, where is Star?

¡Aquí está ella!
Here she is!

Ella está a la
izquierda de la
langosta.

She is to the left of the lobster.



¿Dónde está Estrella?
Where is Star?



¡Aquí está ella!
Here she is!



Ella está a la derecha del
manatí.

She is to the right of the
manatee.

¿Dónde está Estrella ahora?
Where is Star now?

¡Aquí está ella!
Here she is!

Ella está encima
de la tortuga.

She is on top of the turtle.



¿Ahora dónde está Estrella?
Now where is Star?



¡Aquí está ella!
Here she is!

Ella está debajo del
liburón.
She is under the shark.

Artwork by Digitalartsi:

Teacherspayteachers website;

<https://www.teacherspayteachers.com/Store/Digitalartsi>

Written by:

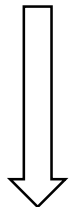
Bronwen M. Dassing

FONTS:

Black Melody Font &
Juice ITC font from:

<https://www.1001freefonts.com/>

Tape this side.



Cut carefully to the inside
of the black line. Leave
the left edge for taping.

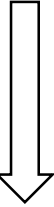
Use the number at the
bottom of the flap to
match it to its
corresponding page.



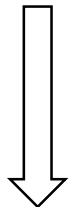
Cut carefully to the inside
of the black line. Leave
the right edge for taping.

Use the number at the
bottom of the flap to
match it to its
corresponding page.

Tape this side.

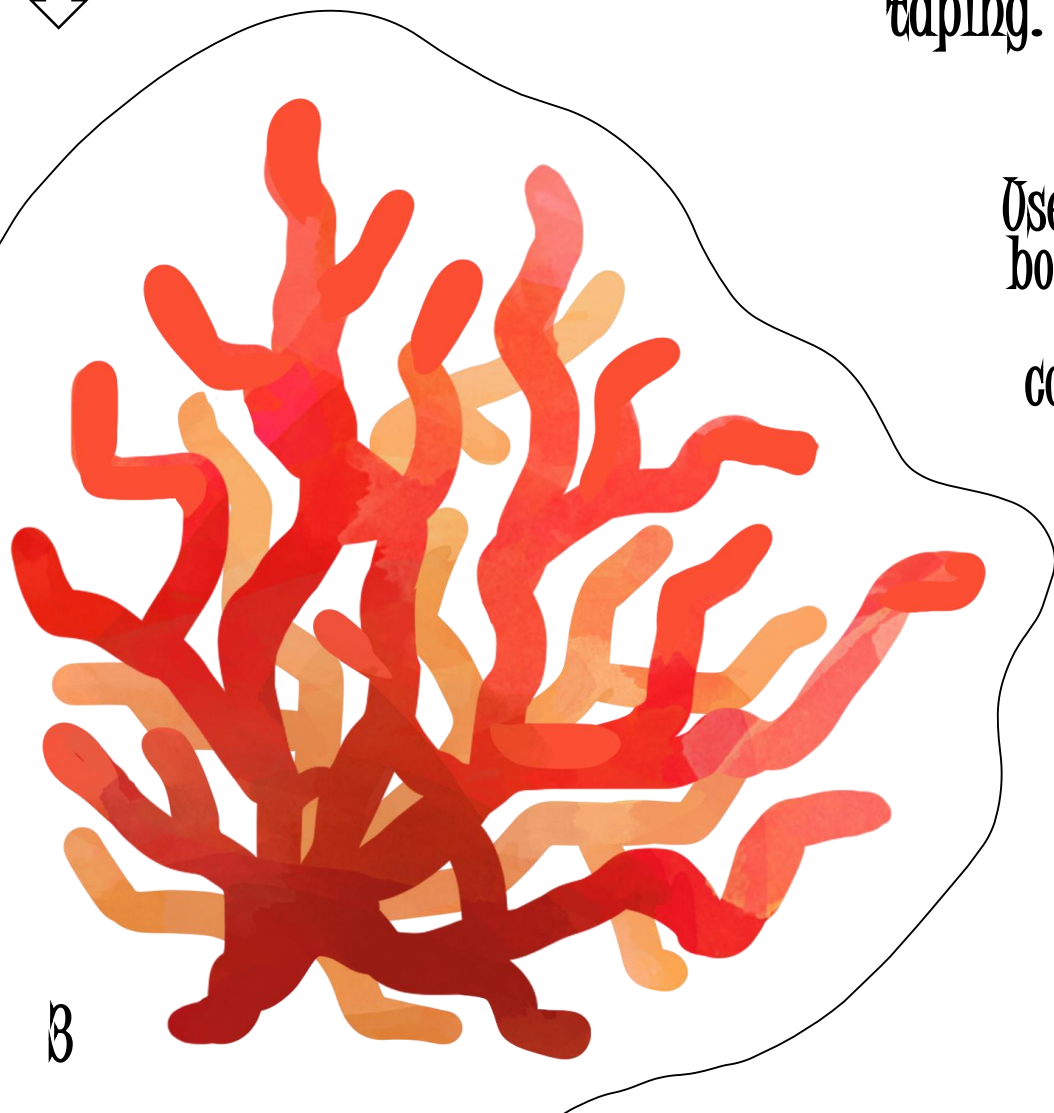


Tape this side.



Cut carefully to the
inside of the black line.
Leave the left edge for
taping.

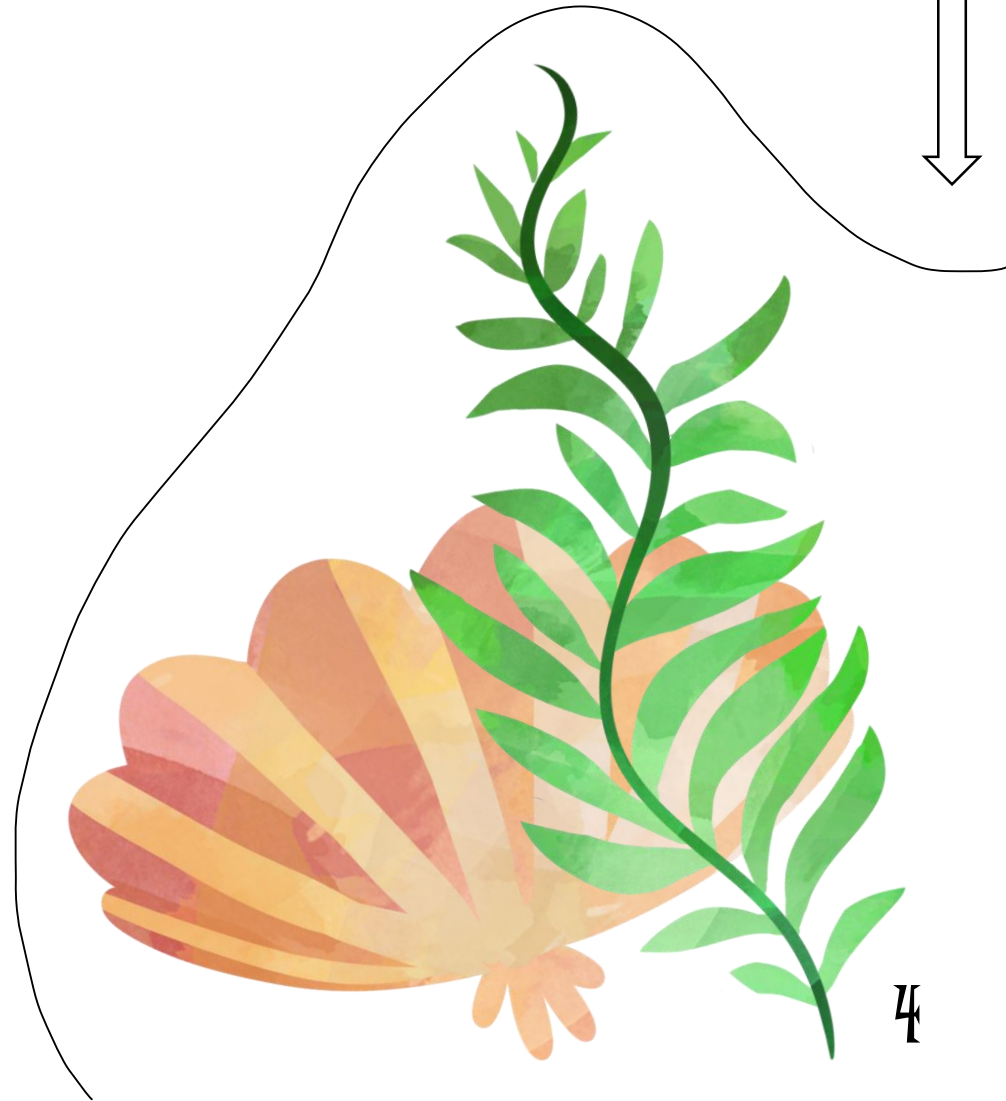
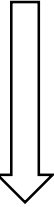
Use the number at the
bottom of the flap to
match it to its
corresponding page.



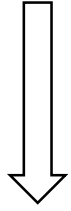
Cut carefully to the inside
of the black line. Leave
the right edge for taping.

Use the number at the
bottom of the flap to
match it to its
corresponding page.

Tape this side.



Tape this side.



Cut carefully to the inside
of the black line. Leave
the left edge for taping.



Use the number at the
bottom of the flap to
match it to its
corresponding page.

Use the number at the bottom of the flap to match it to its corresponding page.

Cut carefully to the inside of the black line. Leave the bottom edge for taping.

Tape the bottom.

